



Santee Cooper

Cross Station CCR Upgrades
Pineville, SC

Santee Cooper selected SEI to construct the first phase of the Cross Station CCR and ELG compliance program in September 2016. The project required extensive mechanical construction and modifications of several critical plant systems. These systems include the Flue Gas Desulfurization System (Mist Eliminators, Bleed System, Limestone Slurry System), Ash Silo Purging System, Flue Gas Duct Redirection and Flue Gas Turning Vane installation.

Project Challenges:

- Routing elevated alloy piping through existing plant
- Hurricane impacts during outage



Project Details:

Completion Date: March 2017

Engineer: WorleyParsons

Peak manpower: 105

Total pipe installed: 3,000 lf

Pipe Material installed:

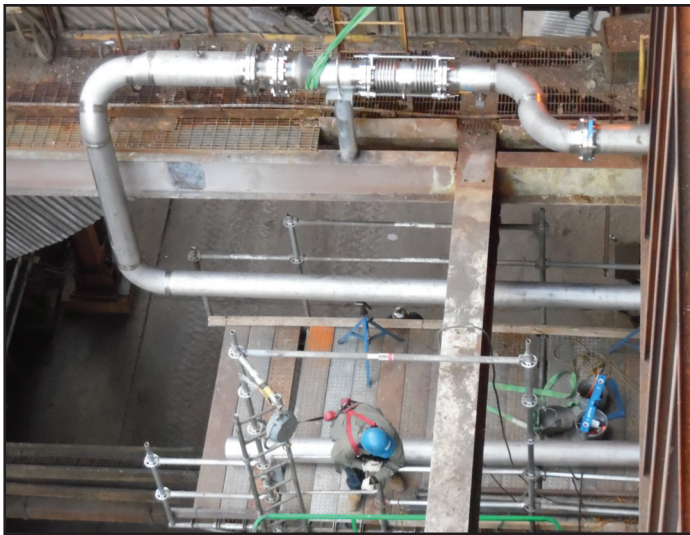
- Hastelloy C276
- 304 SS
- 316 SS
- HDPE
- FRP
- PVC
- Rubber-lined carbon steel



"It was a pleasure to work with a good and professional group of SEI folks during our Fall 2016 outage on Cross Unit 1 FGD. All work scope was completed to our drawings and specifications and in our timeframe.

SEI did an outstanding job in completing punch list items, extra work items, and providing support during and after our unit started up."

***- David Harris
Santee Cooper***



Project Scope:

- New emergency quench water system
- Replacement of pugmill ash unloaders
- Demolition of the absorber bypass ductwork
- New mist eliminator water wash pumps
- New absorber bleed pumps
- New limestone slurry pumps
- Installation of turning vanes in the FGD absorber outlet and inlet ducts
- Replacement of a limestone slurry rubber lined pipe system
- Replacement of a mist eliminator water wash piping system



Corporate Headquarters

6690 West Nine Mile Road
Pensacola, FL 32526
P: 850-944-4475 F: 850-944-8270

Midwest Engineering Office

921 Eastwind Drive, Suite 115
Westerville, OH 43081
P: 614-259-6505 F: 614-259-6510

Email: apcsales@sei-group.com Web: www.southernenvironmental.com