



THERMAL SYSTEMS GROUP

A DIVISION OF SEI

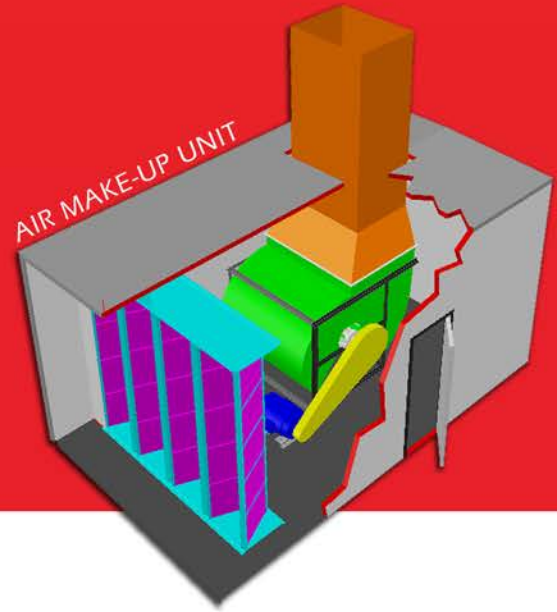


ENGINEERING, DESIGN, FABRICATION, & ERECTION

- GENERAL MACHINE ROOM VENTILATION
- AIR POLLUTION CONTROL SYSTEMS
- PAPER MACHINE HOODS
- HOOD AIR SYSTEMS
- BOILER BREECHING



PAPER MACHINE HOODS & AIR SYSTEMS



Thermal Systems Group (TSG) of SEI services the pulp and paper industry across North America and abroad. SEI/TSG has the experience and knowledge to engineer, design schedule, fabricate and erect complete hood, heat recovery and process air systems.

Thermal Systems Group is the engineering and design division of Southern Erectors. Our design and engineering capabilities combined with our fabrication and erection services provide our customers with a single source of supply.

Thermal Systems Group (TSG) is the largest and only turn-key supplier of hood and process air handling equipment servicing the North American pulp and paper markets.

PAPER MACHINE HOOD



WE SPECIALIZE IN:

- Computational Fluid Dynamics
- Pocket Ventilation Systems
- Heat Recovery Systems
- Yankee Dryer Hoods
- Building Air Systems (Air Make-up)
- Hood Exhaust / Building Exhaust
- Motor Cooling
- Roof Supply Systems
- False Ceilings
- Mist Elimination
- Air to Air Heat Exchangers
- Centrifugal Separators
- Custom Fans
- Cyclone Separators

CFD

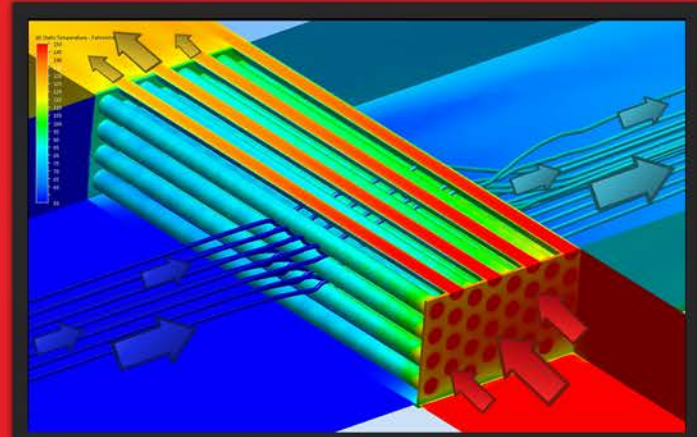
COMPUTATIONAL FLUID DYNAMICS

CFD - Consulting

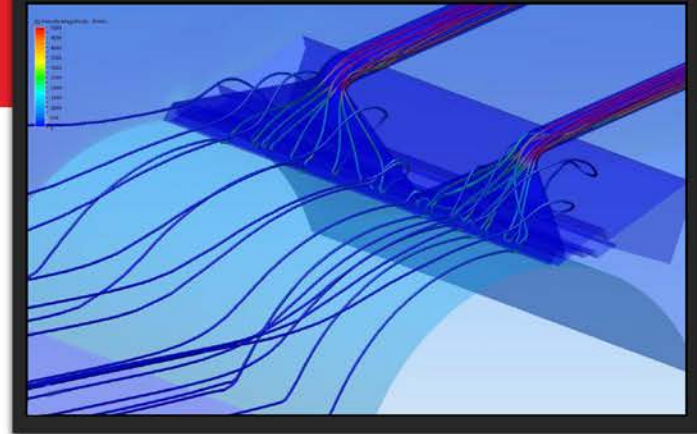
With our advanced 3D-Solid Modeling capabilities and Computational Fluid Dynamics (CFD) software, TSG offers analysis of flow and heat transfer applications.

CFD – What can it do for you?

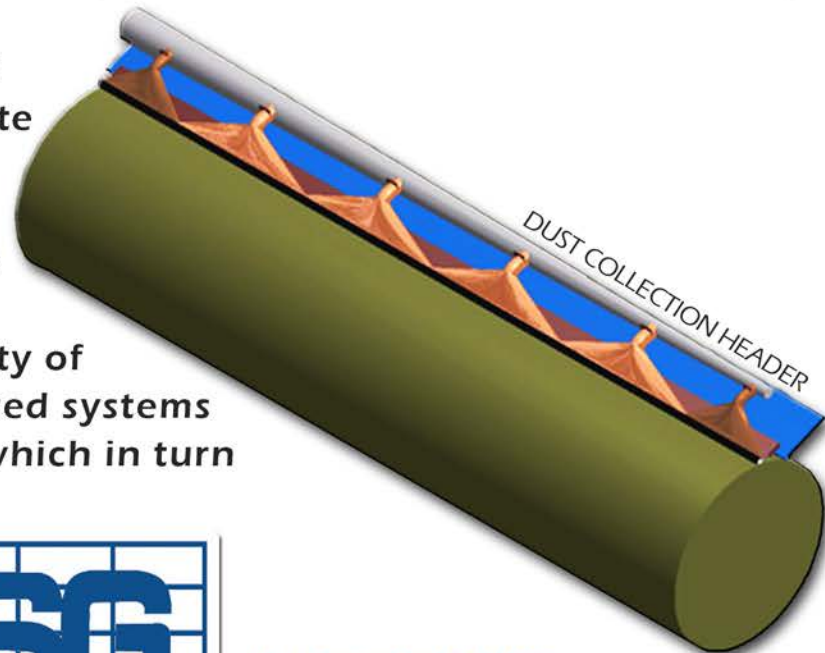
Remove the guess work from expected system performance and wisely allocate capital investments to get the most performance from system products. "See" the system/product performance before it is built and make changes to improve performance! This is the beauty of developing virtual prototypes. Optimized systems can lower horse power requirements which in turn lowers your energy bill.



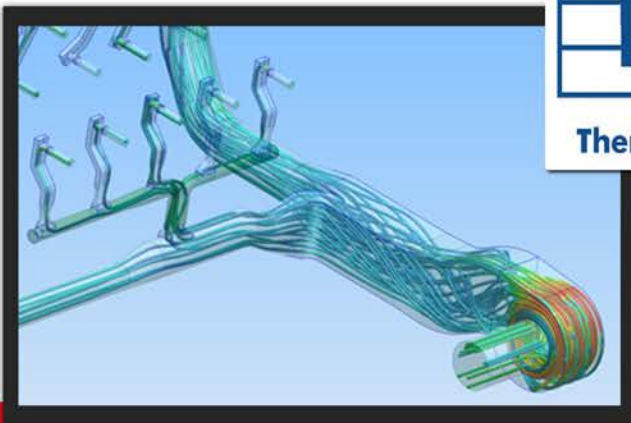
HEAT EXCHANGER



DUST COLLECTOR



PV/VA SYSTEM



Thermal Systems Group

If you would like to learn more about Southern Erectors/TSG please contact us at:

www.SEI-GROUP.com
seisales@sei-group.com
850.944.0013

CAPABILITIES

Industrial Metal Fabrication & Erection Work Since 1973

Southern Erectors, Inc. sits on 10 acres of land in Pensacola, Florida. Our manufacturing facility covers 67,000 square feet and houses the equipment needed to do virtually any type metal fabrication job. SEI has its own transportation system to retain full control from the time of purchase to final installation.

At Southern Erectors we are large enough to build your project right and care enough to give you the personal attention of our top management.

SEI has a full fabrication shop and transportation services. If downtime is critical to your project or if you have an emergency, we have our own crews so we can work around the clock to minimize your loss.

ISNetworld ID 400-150352
Browz ID 62AEG6J4



PAPER MACHINE ROOM FALSE CEILING



POCKET VENTILATION SYSTEM

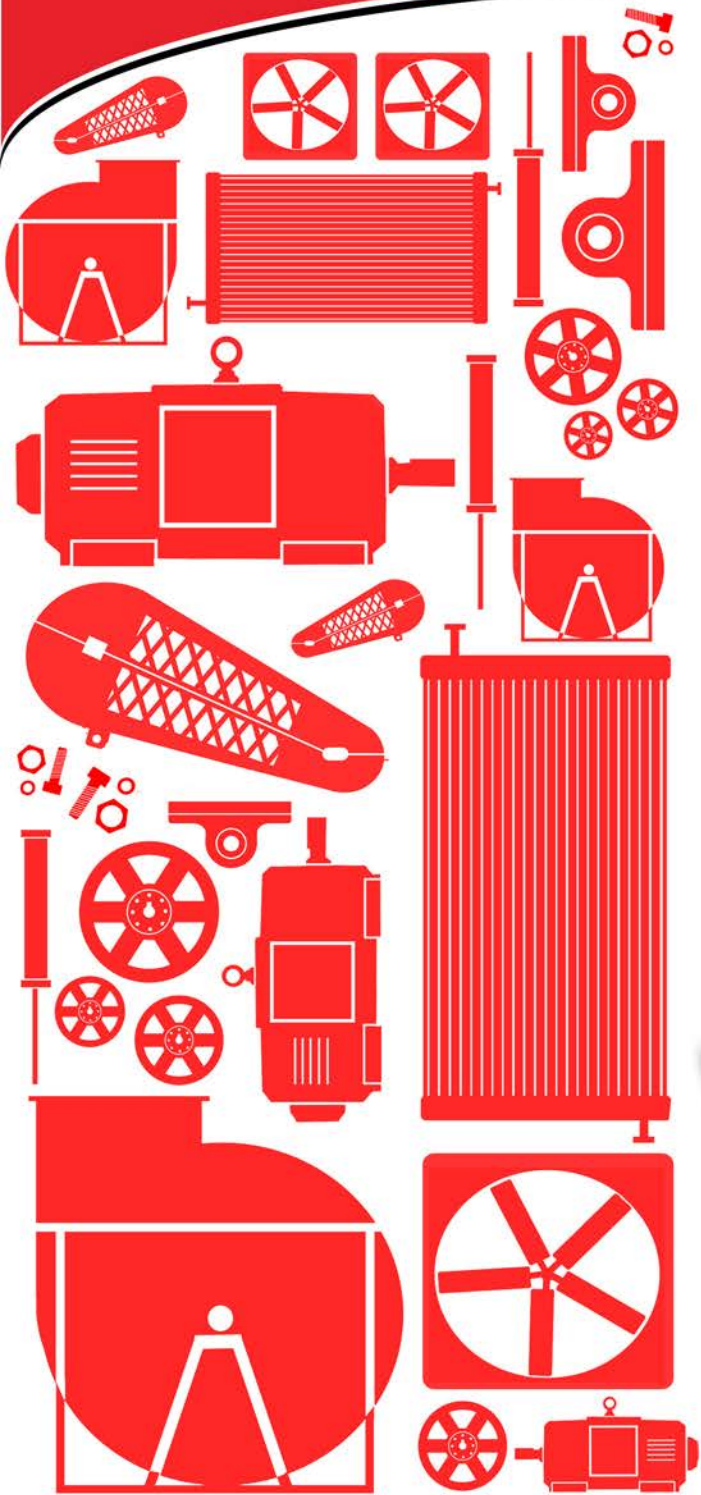
**We guarantee to provide
you the highest quality
service before, during,
and after the sale.**



HOOD EXHAUST SYSTEM

OEM

SPARE PARTS



SEI/TSG has a vast range of qualified suppliers that we do business with, who will aid in supplying our customers with the best suited equipment.

From steam coils to fans our spare parts department can handle any size order!
call today: 850.944.0013

SEI's Fabrication Facility Includes

Shears

- 1 - 12' - 10 gauge capacity
- 1 - 10' - 1/4" capacity
- 1 - 10' - 1/2" capacity 3/8" SS capacity

Hand Brake

- 1 - 16 gauge capacity

Automated Hole Puncher

- 1 - 100 ton capacity

Cut-off saw

- 1 - 14" diameter blade

Power Brake - 200 ton

- 12' - 1/4" plate capacity
- 8' - 3/8" plate capacity
- 6' - 1/2" plate capacity
- 1 - Powerbrake 10' - 16 gauge cap.

Power Roller

- 1 - 8' wide - 1/4" capacity
- 1 - 5' wide - 1/4" plate capacity
- 1 - 4' wide - 16 gauge capacity
- 1 - 5' wide - 16 gauge capacity

Lock Former

- 1 - 16 gauge capacity
- 60" wide automated coil line
- 1 - 14 gauge maximum

Angle Roller

- 1 - 2" X 2" X 1/4" maximum
- 1 - 3" X 3" X 3/8" maximum

Ironworker

- 1 - 3" X 3" X 3/8" angle maximum

Beading Machine

- Up to 16 gauge capacity

Band Saw

- 20" throat

Pipe Threaders

Up to 4" diameter pipe

Forklifts

- 1 - 15,500 pound lift
- 1 - 12,000 pound lift - new
- 1 - 6,000 pound lift
- 7 - 5 ton capacity overhead shop cranes

Plasma Cutters Table 10'x43'

(Extreme 3100 Cutting Machine)

- 1 - up to 2" SS plate
- 1 - up to 2-1/2" CS plate
- 10 - Oxyacetylene

Welding Machines

- 24 MIG Systems
- 2 DC power sources (SMAW)
- 5 TIG Systems

Sheet Metal Coil Line

2 - Track torches

- 100,000 ft² office and fabrication facility
- Separate fabrication areas for pipe, double wall panels & structural steel
- Complete and enclosed sandblasting and painting building
- 10,000 ft² warehouse facility
- Various welding equipment and small tools
- Trucks and trailers, office trailers w/contents and storage trailers
- 10 acres laydown yard

SEI-GROUP



SOUTHERN
environmental INC.



Thermal Systems Group

DESIGN * ENGINEER * FABRICATE * INSTALL

WWW.SEI-GROUP.COM